

Full range for automation

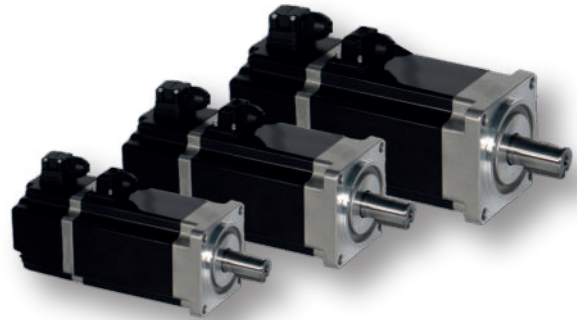
Compact Brushless Drives

SMD Series



Brushless Servo motors

SF Series



Motion Axis Controller

MPC Series



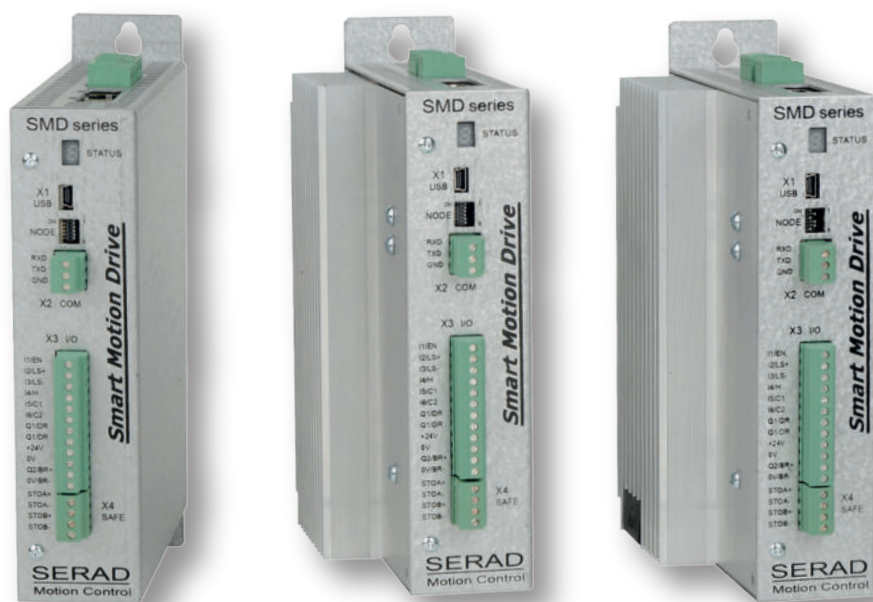
Remote I/O modules

RIO Series



COMPACT BRUSHLESS DRIVE

- ➔ For brushless motors up to 8.8 kW
- ➔ Power supply 48Vdc or 230 to 400Vac direct mains
- ➔ Torque, speed and positioning modes
- ➔ Multi-protocol communication
- ➔ Several types of motor feedback
- ➔ Safety STO Category 4 - SIL3 / PL e
- ➔ Compact case

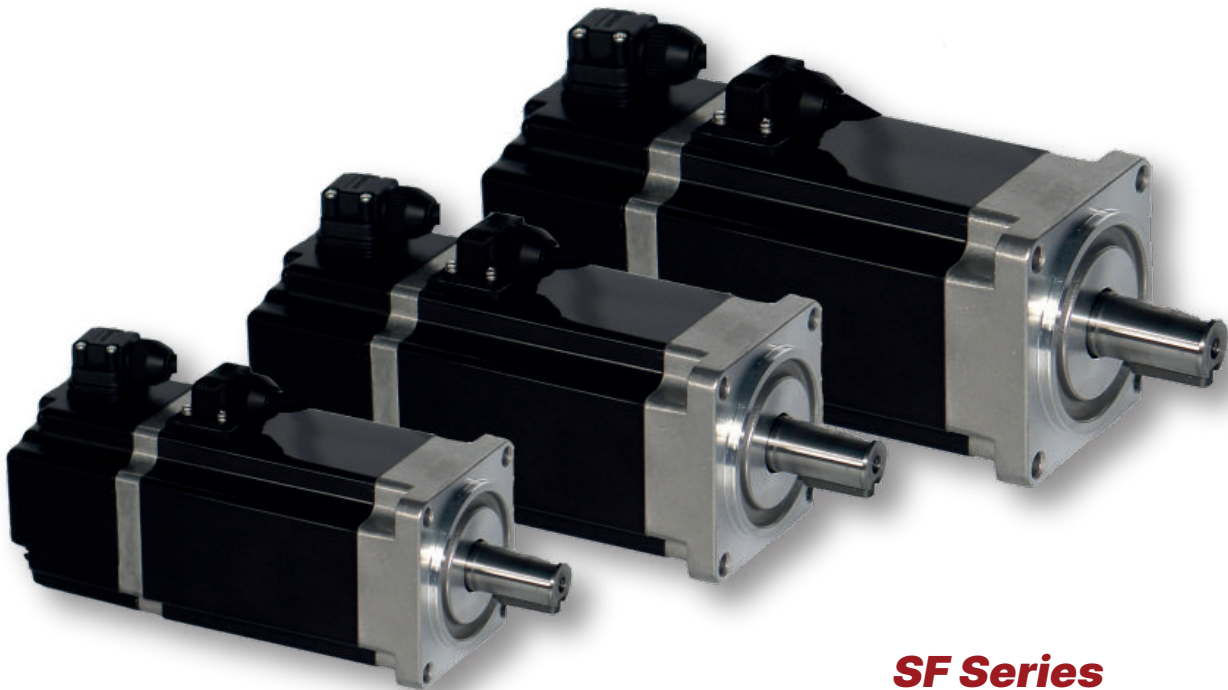


SMD Series



BRUSHLESS MOTORS

- ➔ A complete range from 0,2 to 115 Nm
- ➔ High dynamics / low inertia
- ➔ Voltage 24V, 48V, 230V or 400V
- ➔ Different speeds available
2000, 3000, 4000, and 6000 RPM
- ➔ Magnet Nd - Fe B
- ➔ Integrated thermal probe



SF Series

AXIS CONTROLLERS

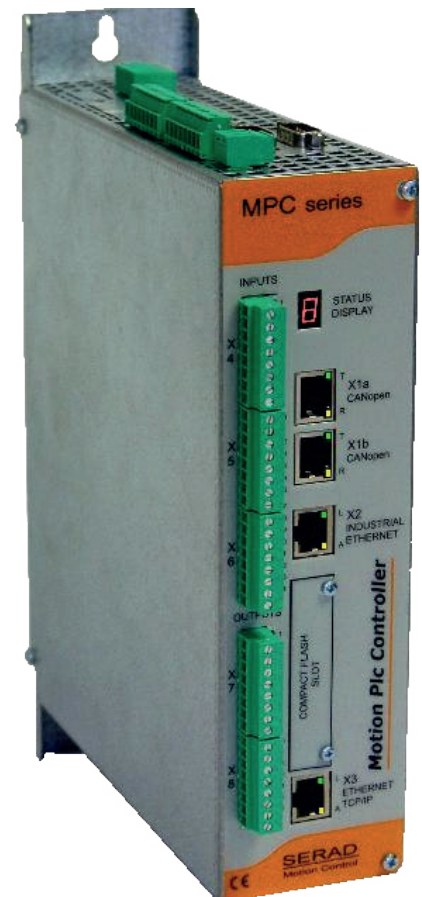
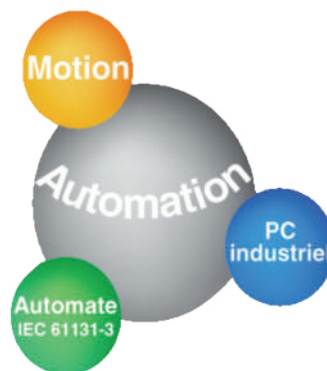
- ➔ Core PC base
- ➔ Multi-axis management from 1 to 64 axes
- ➔ Advanced MOTION features
- ➔ Integrated IEC61131-3 controller
- ➔ Real Time Core
- ➔ Multi-protocol communication
- ➔ Rapid development
- ➔ Setting tools

Ether**CAT**®

CANopen®

TCP
Modbus

USB
UNIVERSAL SERIAL BUS



MPC Series

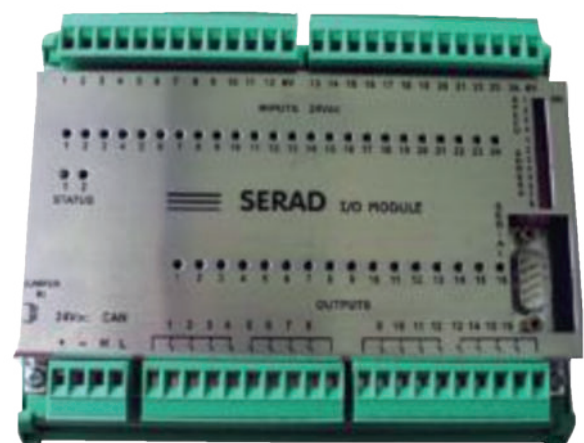
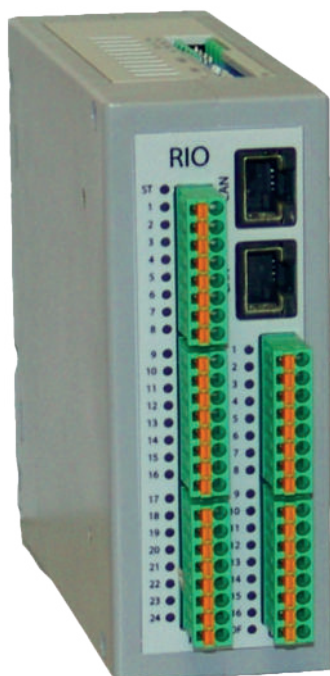
REMOTE I/O MODULES

- ➔ Digital inputs / outputs PNP 24Vdc or relay
- ➔ Analog inputs / outputs
- ➔ Spring loaded plug-in terminal blocks
- ➔ Snaps onto DIN rail
- ➔ Ultra compact case
- ➔ Reduced wiring time

Ether**CAT**®

CANopen®

Modbus



RIO Series